

BUSINESS - LEISURE PLANNER

YOUR GUIDE TO  
NORTH  
SULAWESI

Presented by



MERCURE MANADO TATELI RESORT AND CONVENTION







## CONTENTS

### 1. WONDERFUL INDONESIA

Don't miss the magic of the archipelago

### 2. NORTH SULAWESI AT A GLANCE

An overview of the Asian Pacific  
gate of Indonesia

### 3. WHY NORTH SULAWESI?

The culture, the corals, the cuisine,  
the creatures and the cool adventures

### 4. MANADO CITY

Eat, sleep, dive, meet, repeat

### 5. TOMOHON CITY

Up, up and away in the mountainous  
countryside

### 6. MINAHASA REGENCY

Into the wild: volcanoes, lakes,  
hot springs and beaches await

### 7. SOUTH MINAHASA REGENCY

Connecting people and places

### 8. MERCURE MANADO TATELI RESORT AND CONVENTION

One-stop MICE destination designed  
to delight your delegates and recharge  
your team

### 9. TRAVEL INFORMATION

All you need to know to plan an  
unforgettable trip to North Sulawesi

# NORTH SULAWESI



# WONDERFUL INDONESIA

Bromo

Photo by Atik Sulianami





*Komodo Dragon  
Photo by Andrew Jaehyun Rhee*

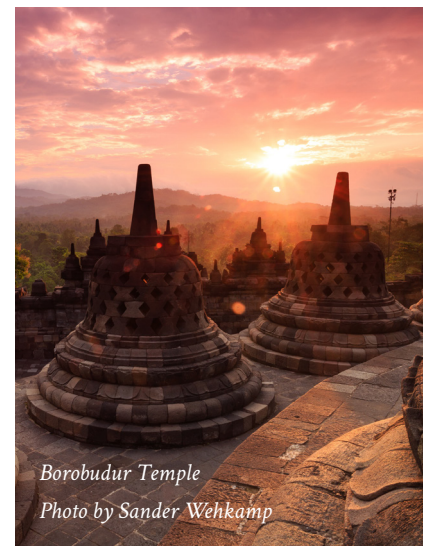
Comprising 17,508 large and small tropical islands along the Ring of Fire and at the beating heart of the Coral Triangle, the world's largest archipelagic nation of Indonesia is blessed with unrivalled natural wonders, stretching from rumbling volcanoes to lush rainforests to deep-water paradise.

The diverse landscapes attract uniquely indigenous wildlife such as the Komodo dragons, the Orangutans, the Cendrawasih birds of paradise, the Sumatran tigers and elephants, the Javan rhinoceros and many more. Below the sunny surface, Indonesia's spectacular coral reef is home to the richest and most biodiverse marine ecosystems on the planet, luring underwater lovers with its kaleidoscopic corals and vibrant fish fauna.

The climate of Indonesia is almost entirely tropical and tends to be relatively even year-round. The tropical country has two seasons: wet and dry. For most of Indonesia, the dry season falls between April and October and the wet season between November and March.

As the largest Muslim population and the fourth most populous country in the world, Indonesia has over 260 million people of more than 300 ethnicities, each with their own languages, dialects, cultures, customs and traditions, contributing to the beautiful, rich tapestry of Indonesian life. While the majority of the population embraces Islam, Hindu is the predominant religion on the island of Bali. Catholics and Protestants are scattered across other areas like North Sulawesi, North Sumatra, East Nusa Tenggara and Papua.

With a rich history dating back to ancient times, Indonesia is a cultural phenomenon that holds an impressive array of important monuments and historical relics, such as the imposing Buddhist temple of Borobudur and the fascinating Hindu temple of Prambanan in Central Java—both 9th-century monuments are included on the coveted list of UNESCO World Heritage Sites.



*Borobudur Temple  
Photo by Sander Wehkamp*





Indonesia has a mixed economy in which both the private sector and the government play significant roles. Over time, the structure of the Indonesian economy has changed considerably. Recent strong economic growth has been accompanied by a relatively steady inflation. As an active member of the G20 and one of the largest economies in Southeast Asia, Indonesia is predicted to become one of the world's top ten economies by 2030, potentially surpassing the economies of the UK and Germany.

The beauty of Indonesia is second to none. The archipelago promises some of the greatest adventures on earth with its natural splendours, intriguing heritage and unparalleled hospitality. As the ultimate country in diversity, everyone is welcome to Wonderful Indonesia!



*Jakarta  
Photo by Gede Suhendra*



*Mount Bromo  
Photo by Iswanto Arif*



*Waterfall*



*Orangutan  
Photo by Sander Wehkamp*





## DID YOU KNOW?

The name Indonesia is derived from the Latin word Indus, which means Indian, and the Greek word nesos meaning island. Indonesia was initially called Indian Archipelago or East Indies Islands. James Logan, editor of the Journal of the Indian Archipelago and Eastern Asia, coined the name Indonesia in the 1850s, short for Indian Archipelago.

Indonesia has over 400 active volcanoes and records at least three earthquakes a day.

Home to a rich variety of flora and fauna, Indonesia has the second highest level of biodiversity in the world after Brazil.



# NORTH SULAWESI AT A GLANCE

Merapit Island

KAWIO Islands

Bukide Island

Kendahe  
Sangihe Island  
Tamako  
TAHUNA  
Manalu

Ondong  
Siau Island

Ondong  
Tagulandang Island

Ruang Island

Biaro Island

Talise Island

Bangka Island

Wori  
Likupang

MANADO

BITUNG



Bunaken Island

Mt. Klabat



Kali Waterfall

Tomohon  
TONDANO



Waruga



Tondano Lake

Amurang

Tombatu

MALUKU SEA





**T**he Indonesian province of North Sulawesi has plenty to offer in a relatively condensed space. Snorkellers and divers love to explore the pristine coral reefs of Bunaken National Marine Park, while avid underwater photographers flock to the Lembeh Strait for world-class muck-diving boasting very quirky macro life. Adventurers and nature lovers can head up to the volcanic scenery near Tomohon or trek to Tangkoko-Batuangus Dua Saudara Nature Reserve to spot the rare Tarsius, the planet's smallest primate.

## HISTORY

A group of independent states was established at a meeting of the linguistically diverse Minahasan peoples around AD 670 at a stone now known as Watu Pinabetengan (near Kawangkoan).

In 1677 the Dutch occupied Pulau Sangir (now Pulau Sangihe) and,

two years later, a treaty with the Minahasan chiefs saw the start of Dutch domination for the next 300 years. Although relations with the Dutch were often less than cordial, and the region did not actually come under direct Dutch rule until 1870, the Dutch and the Minahasans eventually became so close that the north was often referred to as the '12th province of the Netherlands'.

Christianity became a force in the early 1820s, and the wholesale conversion of the Minahasans was almost complete by 1860. Because the school curriculum was taught in Dutch, the Minahasans had an early advantage in the competition for government jobs and positions in the colonial army.

The Minahasan sense of identity became an issue for the Indonesian government after independence. The Minahasan leaders declared their own autonomous state of North Sulawesi in June 1957.



*Mahembang Beach  
Photo by Mondphotoworks*



*Minahasan Troops  
Photo by Tropenmuseum*

The Indonesian government then bombed Manado in February 1958, and by June, Indonesian troops had landed in North Sulawesi. Rebel leaders retreated into the mountains, and the rebellion was finally put down in mid-1961.

## GEOGRAPHY

North Sulawesi is situated on the northern Minahasa Peninsula of Sulawesi Island, south of the Philippines and southeast of Malaysia. The province consists of 15 regencies with Manado as the capital and the largest city.

Most of the mainland of North Sulawesi consists of mountains and hills interspersed by the valleys that make up the land. Along the coast of North Sulawesi, both on the mainland coast and on the coast of the islands, there are several headlands and bays. The land structure of North Sulawesi in the form of latosol covers 531,000 ha spread in several fertile areas.



# NORTH SULAWESI AT A GLANCE

## DEMOGRAPHICS

North Sulawesi recorded a total population of 2,461,028 in 2017, with Manado as the most populated city. Contrary to other provinces of Indonesia, most of the people of North Sulawesi adhere to Christianity due to the prominent Dutch missionary activity during the colonial era.

In 2017, about 62% are Christians (predominantly Protestants with a sizeable Catholic minority), followed by Muslims and Hindus. Communities that embrace Chinese folk religions such as Buddhism, Confucianism and Taoism mostly reside in Manado.

Ethnicity in North Sulawesi is more heterogeneous than other parts of Indonesia. The Minahasan is the dominant ethnic group in the province. Other ethnic groups include the Bolaang Mongondow, Sangihe, Talaud and Siau. In addition to the natives, North Sulawesi is also home to a significant population of Chinese migrants and other ethnic groups such as Javanese and Sundanese.

## LANGUAGE

Bahasa Indonesia is the official language of the province, as well as other parts of Indonesia. However, Manado Malay is the lingua franca of the province. This creole

language resembles Indonesian but with a distinct accent and dialect. Some of the vocabularies are derived from Dutch, Portuguese and other foreign languages.

Manado Malay is often used in day-to-day communication between different ethnic groups. The Minahasan languages are a group of languages spoken by the Minahasan people around the central and northern part of Sulawesi. To the south, the Mongondow and Gorontalo languages are commonly spoken. In the northern islands bordering the Philippines, the locals speak the Visayan languages.



Manado City Church  
Photo courtesy of Dinas Pariwisata Kota Manado



Dragon at Monastery  
Photo courtesy of Dinas Pariwisata Kota Manado



# WHY NORTH SULAWESI?





# WHY NORTH SULAWESI ?

## STRATEGIC LOCATION

Dubbed the gateway of Indonesia in the Asia Pacific, North Sulawesi is geographically located at the edge of the Pacific along the world's trade line. This strategic position is also supported by the huge potentials in local resources, especially in the sectors of tourism, agriculture, fisheries and mining, which play key roles in driving the economy of the province.

## EXCELLENT VALUE

North Sulawesi is increasingly recognized as one of the few provinces in Indonesia that deserves to be promoted as a great investment destination due to its strategic location, enormous tourism potentials and political stability.

The Indonesian government is carrying out various infrastructure and tourism development projects to enhance connectivity and create a better investment climate, hence attracting more investors to transform the province into the ultimate tourist destination.

## UNIQUE VENUES

Convention centres with modern facilities, meeting rooms with exotic settings and outdoor events can be arranged to meet the needs of your business-leisure

activities. The newly renovated Mercure Manado Tateli Resort and Convention is the perfect hotel for the most discerning business and leisure travellers, boasting 242 contemporary hotel rooms, a new convention centre, a variety of meeting and function rooms and a selection of leisure facilities in a beautiful beachfront setting that truly inspires.

## WARM HOSPITALITY

North Sulawesi is named "The Land of Smiling People" for a reason. Bolaang Mongondow, Sangihe, Talaud, Siau, Chinese, Javanese, and Sundanese—here, everyone is family. The people of North Sulawesi are extroverts, friendly and communal who enjoy a multi-cultural, multi-ethnic and multi-faith environment. Racial harmony and cultural celebration are the foundations of its society.

## NATURAL BEAUTY

North Sulawesi is endowed with an abundance of natural wonders, cultural heritage and tourist destinations well suited to all kinds of visitors. An exciting array of pre- and post-event activities awaits delegates. We guarantee you unforgettable experiences at cost-effective rates.



*Pygmy Seahorse  
Photo by Cary Yanny*

### • Explore one of the world's finest diving spots!

Dive the clear waters, steep walls and world-class coral gardens of Bunaken National Marine Park. Visit Bangka Island for an encounter with whales, dugongs and other pelagic. Sail to the Sangihe Islands and dive in search of a sunken kingdom, through shoals of fish or on an underwater volcano. Explore Lembeh Strait and discover its rare and unusual macro life and WWII shipwrecks. Whether you are a novice or an expert, we have the diving spot for you.

### • Discover the beautiful highlands of Minahasa

Take a trip to the highland towns of Tomohon and Tondano. Clove and coconut plantations, rice paddies and flower gardens fill the highlands with the same beauty and serenity found in our smiling people. Visit a small pottery village

and a Chinese Buddhist temple. Pack a picnic lunch and hike to a mountain waterfall. Enjoy a soak in one of the natural hot springs. Spend the night at a cottage on Lake Tondano and relax in the peaceful atmosphere and cool mountain air, far from the hustle and bustle of everyday life.

• **Experience true wilderness adventures**

Climb to the rim of a steaming volcano. Raft down the white-water rivers of Sonder and Airmadidi. Trek through the majestic rainforest. See the world's largest concentration of black-crested macaques and look for the tarsiers, the world's smallest primates, at Tangkoko Nature Reserve. Visit Dumoga Bone National Park for the fabled North Sulawesi babirusa.

## CULTURAL TREASURES

Although the majority of the population of North Sulawesi are Christians, they have kept numerous traditional arts from pre-Dutch colonial times when many converted to Christianity. You might hear the kolintang, a Minahasa traditional musical instrument made from lightweight but strong local wood, commonly used in Minahasan ritual ceremonies. This ancient instrument is somewhat like a xylophone and is usually performed in a group with many kolintang playing different tones.



*Babirusa*

Playing bamboo flute is also common practice in Indonesia, as bamboo grows wild in all regions. Under the influence of the Iberian and Dutch orchestra during the occupations, the Minahasan people adapted the European musical tradition and expanded the single bamboo flute into a complete orchestra made entirely from bamboo.

Most Minahasan villages have a bamboo orchestra to perform on special outdoor festivities such as weddings. According to the Guinness World Records, at an event organised by Mr Benny J. Mamoto in Tondano on October 31, 2009, 3,011 people performed the largest bamboo orchestra.

“Fun is one of the most important—and underrated—ingredients in any successful venture. If you’re not having fun, then it’s probably time to call it quits and try something else.”

~Richard Branson

If you get a chance, check out the kabasaran, a traditional Minahasan war dance performed exclusively by men of warrior lineage as a welcome dance or in traditional ceremonies. The dance is accompanied by percussion instruments such as tambour (small gongs), drums, or kolintang. The costumes include stunning feather headdresses and are traditionally bright red in colour.

Another intriguing Minahasan dance is the maengket, a traditional dance performed in ceremonies and on special occasions such as the joyful celebration of a successful harvest and the welcoming of prominent visitors. Spirited harmonic songs in the form of Minahasan communal work accompany the maengket.



## CULINARY TREATS

Minahasan cuisine is famous throughout Indonesia for its rich seafood variety, generous use of spices (sometimes making up more than half of the whole dish's ingredients), extra hot condiments, exotic bushmeat and European-inspired cakes and pastries.

Seafood is one of the staples of the region. You'll find tuna, red snapper and mackerel on most menus. Cakalang fufu is a smoked skipjack tuna very popular with locals. Try tinutuan for breakfast—a rice porridge made with corn, smoked fish, greens and chillies, or opt for nasi kuning—rice cooked in coconut milk and turmeric, rendering it yellow and yummy, served with shredded cakalang, shredded beef and topped with fried onions or fried potato.



Spice lovers should taste rica-rica or woku dishes—fish or meat cooked in the signature Manadonese



bumbu (spice blends) of red-hot chilli peppers, shallots, garlic and tomato. This mouth-watering dish is a favourite among locals and can be found in just about every restaurant in North Sulawesi. Spicy condiments such as dabu-dabu and sambal roa are often served fresh as dipping sauces.

The Minahasan people are infamous for their bushmeat tradition and it is considered prestigious to consume rare and unusual meats. For those who love extreme cuisine, dogs, cats, frogs, forest rats, snakes, wild boars and bats are commonly eaten in the region and are readily available in the notorious markets of Tomohon and Tondano area. Sometimes protected and endangered animals such as yaki (Sulawesi black macaque), kuse (slow loris), tapir and anoa are illegally sold in the marketplace as food.

To end your Minahasan culinary adventures on a sweet note, head to the closest bakery for a traditional klappertaart (coconut tart in Dutch).



## DID YOU KNOW?

In Indonesia, rice in the field is called padi, uncooked rice grain is called beras and cooked rice is called nasi.

The word ketchup in English originates from the Indonesian word kecap, a sweet soy sauce and a popular condiment in Indonesian cuisine.

Indonesians order their coffee based on its colour: hitam manis means black with sugar and kopi susu refers to coffee with milk.

Indonesia is the world's primary exporter of frog legs. In the last decade, European countries such as France, Belgium and the Netherlands imported 4,600 tons annually.



# MANADO CITY



**T**ravellers visiting North Sulawesi often arrive at Manado, its prosperous capital and the second biggest city on the island after Makassar with a population of over 450,000. Manado is accessible, friendly and safe with a decent selection of accommodations, including well-known international hotel brands such as the Mercure Manado Tateli Resort and Convention, and an excellent dining scene serving up some of the spiciest dishes in Indonesia.

Due to its proximity to Bunaken National Marine Park and Lembeh Strait, Manado attracts thousands of scuba diving enthusiasts every

year, acting as a gateway to some of the most magnificent coral reefs and marine ecosystems in the world.

The city itself has a few sights worth seeing. Beautiful churches and monuments are scattered in every corner. Shopaholics will find themselves right at home in the shopping malls on Boulevard Road. Nature lovers and adventure seekers can escape the hustle and bustle of the city and head up to Mount Tumpa, Tomohon, the Minahasa Highlands and Tangkoko-Batuangus Dua Saudara Nature Reserve for some crisp mountain air, outdoor activities and wildlife sightings.

Within the last two decades, tourism has increased significantly and become one of the most important sectors contributing to the economic development. Supported by the provincial government, many new tourism facilities and attractions have





flourished, road access has improved and the international airport has expanded.

Taking full advantage of its natural splendours, Manado has also hosted prestigious international events such as World Ocean Conference, Coral Triangle Initiative and Sail Bunaken, further confirming itself not only as a world-class diving destination but also as the centre for marine science research.



*Soekarno Bridge*

## DESTINATIONS

### Bunaken National Marine Park

The Bunaken National Marine Park is one of the most diverse coral reef ecosystems in the world, covering an area of 89,095 hectares consisting of five islands: Bunaken, Manado Tua, Mantehage, Nain and Siladen. The park is home to around 200 species of fish and 50 genera of coral reefs as well as endangered marine mammals and reptiles, birds, molluscs and mangrove species. Located just 30 minutes away by boat from the port of Manado, the park is truly a paradise for divers, snorkellers and nature lovers.



*Manado Tua*  
*Photo by tantular.com*



*Blue ring octopus*  
*Photo by Thomas Heckmann*

### Siladen Island

Siladen Island is situated a few kilometres away from Sulawesi's north coast, accessible only by a 30-minute boat ride. This tiny island is entirely fringed by coral reefs offering jaw-dropping drop-offs where colourful soft corals, sea anemones and sponges thrive.

### Manado Tua Island

Manado Tua is an inactive volcanic island off the west coast of North Sulawesi. Covering a total of 89,065 hectares, the dive sites around this island are some of the best in Indonesia.

### Malalayang Beach

Malalayang Beach stretches about 500 metres from Malalayang terminal. Here, visitors can enjoy a beautiful sunset with Manado Tua and Bunaken Island as scenic backdrops.



*Mount Tumpa*

### Mount Tumpa

Mount Tumpa is located in a conservation area in the village of Tongkaina and can be reached in less than an hour by car from Manado. It stands at 750 metres above sea level, making it suitable for non-hikers. The mountain sits atop a protected park of rainforests, shrubs, meadows, agricultural land and palm tree plantations.



### **Boulevard Road**

Facing the vast Pacific Ocean, the Boulevard Road, as the Manadonese would call it, is the heart of Manado. Here you can mingle with the locals in malls, shops, clubs, bars, cafes and restaurants serving up some of the city's best cuisine.

### **Chinatown**

Chinatown refers to a neighbourhood in Manado in which Chinese descendants reside. This area is located near the Ban Hin Kiong Temple, the oldest Taoist temple in town built in 1819.

### **Jesus Blesses or Christ Blessing Monument**

Jesus Blessing (Yesus Memberkati in Manado language) is a 30-metre-tall statue of Jesus Christ with upraised hands overlooking Manado and its surroundings. Standing on a 20-metre-high pedestal at 242 metres above sea level, it has become the new icon of Manado and as of 2010, Asia's second tallest and the world's fourth tallest statue of Christ.



### **Boboca (Octopus) Monument**

Upon entering the city, you'll see the iconic monument of Boboca (meaning octopus in Manado language) that resembles an octopus with its tentacles welcoming visitors. It is located on Malalayang Beach right at the border of southern Manado.

### **Wakeke Culinary Area**

The bustling culinary destination of Wakeke is located in the district of Wenang. It is a narrow 150-metre long street where foodies can feast on authentic local dishes in numerous restaurants. Watch out for the killer chillies!





# TOMOHOH CITY

“Study nature, love nature, stay close to nature. It will never fail you.”  
-Frank Lloyd Wright

*Rurukan Village*

**T**omohon is a cool, picturesque town resting 800 metres above sea level flanked by two volcanoes: Mount Lokon and Mount Mahawu. In this beautiful mountainous countryside, the land is extremely fertile and the temperature ranges between 17 and 25 degrees Celsius during the day, luring the citizens of Manado to drive up to escape the heat.



## DESTINATIONS

### Tomohon Prayer Hill

The Tomohon Prayer Hill, also known as Kelong Hill, is one of the natural and religious tourist attractions of North Sulawesi. Besides the amazing view and the cool mountain air of Tomohon, it is also a place of worship for devout Catholics, complete with a chapel and grotto of Virgin Mary and an amphitheatre.



*Prayer Hill*

### Lake Linow

Located in Lahendong Village, about an hour’s drive from Manado, Lake Linow is one of the leading tourist destinations in

North Sulawesi. The fluctuating chemical composition of the sulphuric lake and the refraction and reflection of sunlight cause it to change colours often, going from green to blue to amber.

The word linow is derived from the Minahasan word for water gathering place. There is a small restaurant serving great Minahasan food and snacks.

## DESTINATIONS

### Mount Mahawu

Mount Mahawu is a stratovolcano located in the eastern part of Tomohon City. A small explosive eruption was recorded in 1789. It is a relatively easy mountain to hike for beginners, thanks to an accessible track with stairs purposely built for visitors. At an altitude of 1,324 metres, hikers are rewarded with a panoramic view of Manado, Bitung and Tondano from the mountaintop.

### Mount Lokon

Mount Lokon, with the adjacent Mount Empung, is a twin volcano located west of Tomohon. Standing at about 1,580 metres high, this very active volcano provides a beautiful crater view with cold lava flow reaching 600 metres below the mountain. This mountain occasionally spouts volcanic ashes to the surrounding areas.

### Rurukan Hills

Rurukan Hills is a relatively new tourist destination in Tomohon with an area of more than 500 km<sup>2</sup>. Visitors can enjoy the fresh mountain air, spectacular views of the agriculture and colourful flowers growing on the slopes and around the village.



### Buddhayana Monastery

Entering Kakaskasen area between Mount Lokon and Mount Mahawu, the Buddhayana Monastery stands among the many churches in Tomohon. Originally dedicated to the followers of Taoism, this monastery serves Buddhists as well, featuring religious statues and an eight-level Ekayana Pagoda.



### Tomohon International Flower Festival (TIFF)

Every August, the cool hill town of Tomohon is covered with a gorgeous array of blooming flowers from all over the world during the Tomohon International Flower Festival. TIFF is an annual event organised by the Tomohon Tourism Department and fully supported by the Ministry of Tourism to promote the town's tourism on an international level.



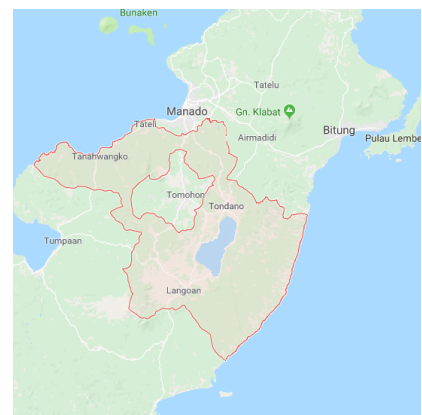


# MINAHASA REGENCY

*Mahembang Beach*

“Earth and sky,  
woods and fields,  
lakes and rivers, the  
mountain and the  
sea, are excellent  
schoolmasters, and  
teach some of us  
more than we can  
ever learn from  
books.”  
~John Lubbock

The Minahasa Regency begins 300 metres above sea level and continues up to 700 metres, with volcanic peaks of more than 1,700 metres. The cool temperature at night offers a relaxing respite from the shorelines and beaches of North Sulawesi. A trip through the Minahasa Highlands will take you to intriguing prehistoric above-ground burial sites, volcanoes, hot springs, the highland of Lake Tondano and breathtaking panoramas of lush mountains, coffee and coconut plantations, orchid gardens and terraced hillsides.



## DESTINATIONS

### Lake Tondano

Lake Tondano is the largest lake in North Sulawesi at 600 metres above sea level, surrounded by mountains with an average altitude of 700 metres. It is the place for fish cultivation as well as a drinking water resource of the Tondano people. Many come to enjoy the panoramic views while discovering Minahasan cuisine in restaurants along the lake.

*Lake Tondano*

*Photo by Fiqih Hamin*



### Mahembang Beach

The serene Mahembang Beach is located in the Kakas district of Minahasa. It takes 3,5 hours by car from Manado to reach this beautiful white sand beach. Work on your tan, refresh yourself in the blue waters or take a walk along the picturesque coastline and explore the stunning cliffs and capes.

### Bukit Kasih

Bukit Kasih or Kasih Hill is located in Kanonang Village and one of the religious tourist destinations in North Sulawesi. Built in 2002 as a spiritual centre where religious followers from various faiths can gather, meditate and worship side by side on the lush and misty tropical hill, this place has become a symbol of North Sulawesi's well-known slogan "Torang samua basudara", meaning we are all family.



*Tetempangan Hill*

*Photo by Andy J Iskandar*

### Boulevard Culinary Tondano

Boulevard Culinary Tondano is located on the wide and straight Boulevard Road, between the green paddy fields. There are plenty of simple stalls offering spicy, delicious Minahasan dishes at relatively cheap prices.

### Tetempangan Hill

Located 568 metres above sea level in Koha, Mandolang district, Tetempangan Hill is surrounded by coconut and clove plantations. Its strategic position offers breathtaking 360-degree views of Tumpa and Lokon mountains, Amurang Bay and Manado Bay Beach. It is the perfect place to catch the sunset and the full-moon panorama in a peaceful setting. Daredevils are welcome to experience paragliding with the professionals at Manado Skyline.

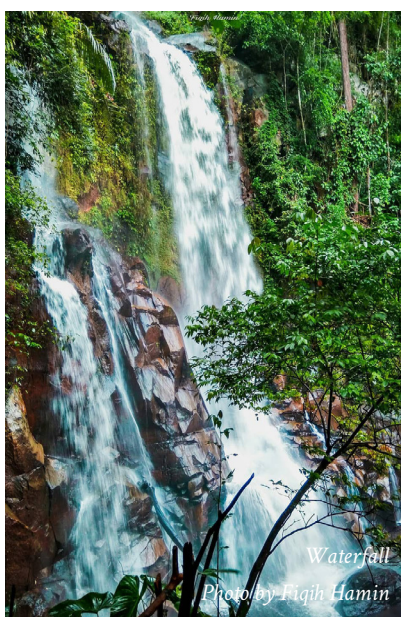
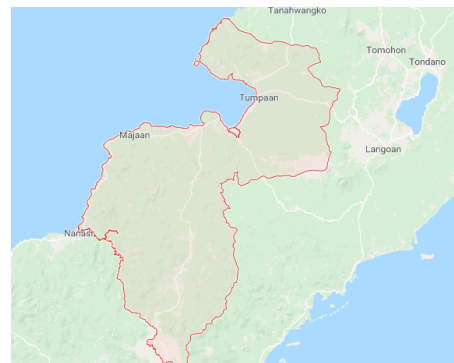




# SOUTH MINAHASA REGENCY

*Batu Dinding  
Photo by Marischka Prudence*

The South Minahasa regency is strategically located on the Trans-Sulawesi lane, a railway network that connects all provinces of the Sulawesi Island. The well-travelled sea route to the north serve as a crossing and transit area for passengers, goods and services in the central and eastern part of Indonesia as well as the Asia Pacific region.



*Waterfall  
Photo by Muqih Hamin*

## DESTINATIONS

### Moinit Beach

Located on the south coast of the regency, Moinit Beach lures both domestic and foreign tourists with its diverse flora and fauna. Whether you choose to go diving, swimming or fishing, Moinit beach is the perfect sandy spot for spending weekends and holidays with families and friends.

### Alar Beach

Situated in Pondang Village in the district of Amurang, Alar Beach is an affordable hotspot for the people of South Minahasa. Visitors can enjoy the beauty of the Amurang Bay while eating cheap, traditional Minahasan snacks.



## DESTINATIONS

### **Batu Dinding Kilo Tiga**

Batu Dinding Kilo Tiga is a natural cliff that soars high around 90 metres from the ground. It is a paradise for outdoor extreme sport enthusiasts, boasting challenging climbing routes on some of the toughest cliffs in Indonesia.

### **Popontolen Waterfall**

The stratified Popontolen Waterfall is located in the village of Popontolen, Tumpaan, an easy 15-minute drive from Amurang. Take a refreshing dip in the cool water and enjoy the natural surroundings.

### **Modoinding Horticulture Area**

At 1,200 metres above sea level, the Modoinding region is cold and fertile—the perfect environment for horticulture. The diversity of crops cultivated in this area provides a natural landscape for the community and draws foreign tourists to the beautiful area.



*Batu Dinding  
Photo by Marischka Prudence*

“Nature is one of the most underutilized treasures in life. It has the power to unburden hearts and reconnect to that inner place of peace.”

~Janice Anderson



# MERCURE MANADO TATELI RESORT AND CONVENTION

WHERE BUSINESS MEETS LEISURE





**M**ercure Manado Tateli Resort and Convention is idyllically situated in the coastal enclave of Manado, overlooking the Pacific Ocean and the renowned Bunaken National Marine Park. Designed with discerning business and leisure travellers in mind, the four-star resort offers a chic, relaxing getaway from the hustle and bustle of city life nestled in a lush 22-hectare beachfront haven.

Mercure Manado Tateli Resort and Convention officially opened in 2015. The recently renovated resort is fast becoming the preferred venue for hosting business-leisure events, featuring a total of 242 stylish rooms, four well-appointed meeting rooms, a modern convention centre that can accommodate up to 1,500 delegates, and an extensive selection of leisure amenities, outbound facilities and fun team-bonding activities.



Our hospitality exudes the authentic charm and effervescent spirit of the Manado people. Our friendly team cares about your comfort and happiness and we strive ensure that your stay with us is truly exceptional.

### REST AND RELAX

At Mercure Manado Tateli Resort and Convention, your restfulness and relaxation are assured. All of our Superior and Deluxe Rooms, Suites and Ambassador Suite are tastefully decorated and meticulously maintained to make you feel at home. Sleep in style

and arise to a view of the tropical garden, the magnificent pool, the spectacular sea or the majestic Manado Tua.

Modern, comfortable and spacious, each light-filled room features contemporary furnishings, safety deposit box, centralised air-conditioning, Wi-Fi access, satellite TV, hot and cold shower, IDD telephone line, bath amenities, minibar and coffee and tea making facilities. Our four-star international brand hotel provides 24-hour reception, concierge and in-room dining services.





## EAT, DRINK AND BE MERRY

“One cannot think well, love well, sleep well, if one has not dined well.” ~Virginia Woolf

Explore an array of casual dining options at Mercure Manado Tateli Resort and Convention. Culinary delights featuring international comfort food, authentic Minahasan cuisine, traditional Indonesian fares and classic Chinese dishes will satisfy and delight every palate. Our chefs will happily cater to special dietary needs, offering a variety of nutritious, gluten-free, vegan and vegetarian options for the health-conscious foodies.

Wake up and smell the Arabica coffee at Kopi 'O' Restaurant and enjoy a sumptuous buffet breakfast. The restaurant is open for all-day dining, serving up delicious international and local a la carte dishes. Chill by the Pool Bar with a fresh coconut from the garden or a cold beer paired with local snacks, and take in the sun and scenery of Manado Tua Island.

## BODY, MIND AND SOUL

The resort's fitness centre and tennis courts make it easy to maintain your healthy lifestyle while vacationing with us. After a good workout, surrender yourself to the healing hands of our therapists at Martha Tilaar Spa—our premium spa partner offering uniquely Indonesian health and beauty treatments with a holistic approach inspired by ancient wisdom and tradition.



Come sundown, toast the Manado sunset with an island cocktail or a glass of wine at The Artist Lounge & Bar, while admiring the curated art collection of local artists. Savour freshly caught seafood and locally-grown vegetables married with exotic Minahasan spices, or order from our in-room menu and have it in the comfort of your room 24 hours a day.

## FUN IN THE SUN

The sun is almost always shining in Manado, so make the most of it and go for a refreshing dip in the large flower-shaped swimming pool, or let the experienced crew at Dave Watersport treat you to some fun water-based actions.

For the ultimate underwater adventure, book a diving trip with our resident partner Eco Divers, a five-star PADI dive centre, and find out why Bunaken is dubbed one of the best diving destinations in the world.

Nature lovers are encouraged to explore the Minahasan wilderness with our knowledgeable guides. The resort's outbound facility combines leisure, adventure and team-building activities with professional instructors to guarantee your safety and comfort.



## MEET WITH MERCURE

Whether you are hosting an intimate power breakfast for 20 or an international conference with 1,000 attendees, Mercure Manado Tateli Resort and Convention offers a unique venue equipped with modern facilities and technologies, complemented with personalised services to ensure an effortless and successful event and a memorable experience for each and every invitee.

Our meeting rooms and convention centre are inviting, comfortable and practical spaces and adorned with local touches, exuding a close-to-nature vibe.

## WHAT WE OFFER

### Guest Rooms:

(with a choice of garden, pool or ocean view)

- Superior Rooms: 92
- Deluxe Rooms: 126
- Junior Ocean Suites: 15
- Ocean Duplex Suites: 8
- Ambassador: 1

### 24-Hour Services:

- Reception
- Concierge
- In-room dining

### Hotel Facilities & Services:

- Dining: The Artist Lounge & Bar, Kopi 'O' Restaurant and Pool Bar
- Martha Tilaar Spa
- Swimming pool
- Fitness centre
- Eco Divers 5-star PADI dive centre
- Dave Watersport

Lush tropical gardens, a large swimming pool and a white-sand beach are available for exciting outdoor receptions and fun activities to complement your business meetings. Our dedicated and approachable team will cater to your every need and assist you with every detail, no matter the time of day.



**Points of Interest:**

- A 60-minute drive to Sam Ratulangi International Airport
- A 45-minute boat ride to Bunaken National Marine Park and Siladen Island
- A 30-minute drive to the shopping and entertainment centres (Bahu Mall Complex, Manado Town Square, Megamall and Megamas)
- A 30-minute drive to the North Sulawesi Police Department
- A 20-minute drive to Prof. Dr. RD Kandou Malalayang Hospital
- A 35-minute drive to Siloam Hospital
- A 10-minute drive to City Extra, the best seafood restaurant in town
- A 20-minute drive to Tetempangan Hills (Manado Skyline), a popular place for paragliding
- A 60-minute drive to Minahasa Highlands



“Great things in businesses are never done by one person. They’re done by a team of people.”  
 ~Steve Jobs

**Meeting Capacity:**

- Number of meeting rooms: 4 + 1 convention centre
- Maximum size: 1,350 m2
- Maximum capacity: 1,500
- Maximum banquet capacity: 750

|                | AREA (m <sup>2</sup> ) | HEIGHT (m) | THEATRE | U-SHAPE | CLASS ROOM | CABARET | BANQUET | COCKTAIL |
|----------------|------------------------|------------|---------|---------|------------|---------|---------|----------|
| MKCC I         | 410                    | 7.0        | 500     | 100     | 150        | 120     | 150     | 650      |
| MKCC I&II      | 820                    | 7.0        | 1000    | 200     | 250        | 240     | 300     | 1200     |
| MKCC I,II&III  | 1230                   | 7.0        | 1500    | 300     | 450        | 400     | 700     | 2000     |
| MINAHASA I     | 200                    | 4.5        | 100     | 25      | 40         | 30      | 50      | 100      |
| MINAHASA I&II  | 450                    | 4.5        | 200     | 60      | 80         | 60      | 90      | 200      |
| TONDANO        | 100                    | 3.5        | 80      | 25      | 33         | 30      | 40      | 100      |
| TOMOHON        | 51                     | 3          | 25      | 15      | 20         | 15      | 24      | 40       |
| TATELI         | 24                     | 3          | 30      | 15      | 12         | 10      | 16      | 20       |
| <b>FOYERS</b>  |                        |            |         |         |            |         |         |          |
| MKCC           | 484                    | 5.1        | 300     | -       | -          | -       | 100     | 500      |
| MINAHASA       | 90                     | 3.5        | 50      | -       | -          | -       | 30      | 100      |
| <b>OUTDOOR</b> |                        |            |         |         |            |         |         |          |
| POOL GARDEN    | 1100                   | -          | 1200    | -       | -          | -       | 600     | 1500     |

CAPACITY OF THE MEETING ROOMS IN NUMBER OF GUESTS

















### Meeting Facilities:

- Meeting kits
- LCD screen and projector
- Soundproofing
- Wi-Fi Internet connection
- Air-conditioner
- Podium
- Daylight
- Pre-function area
- Indoor and outdoor facilities
- Audio and video equipment
- Electronic display with information about your event
- A selection of local and international cuisines

We are happy to discuss the availability of our meeting facilities and services with you. To begin planning your next event, please contact us at:

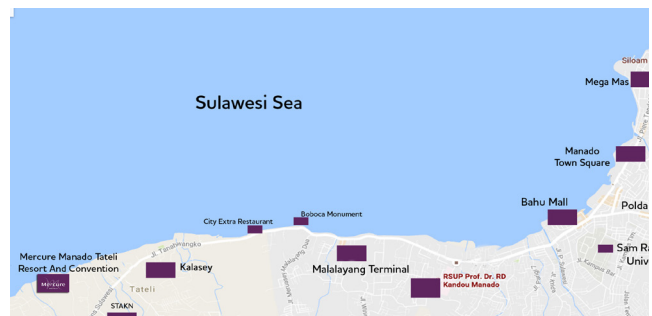
### Mercure Manado Tateli Resort and Convention

Jalan Raya Tanawangko, Desa Tateli  
Kecamatan Mandolang, Kabupaten Minahasa  
Sulawesi Utara, Indonesia

Tel: +62 431 825 888

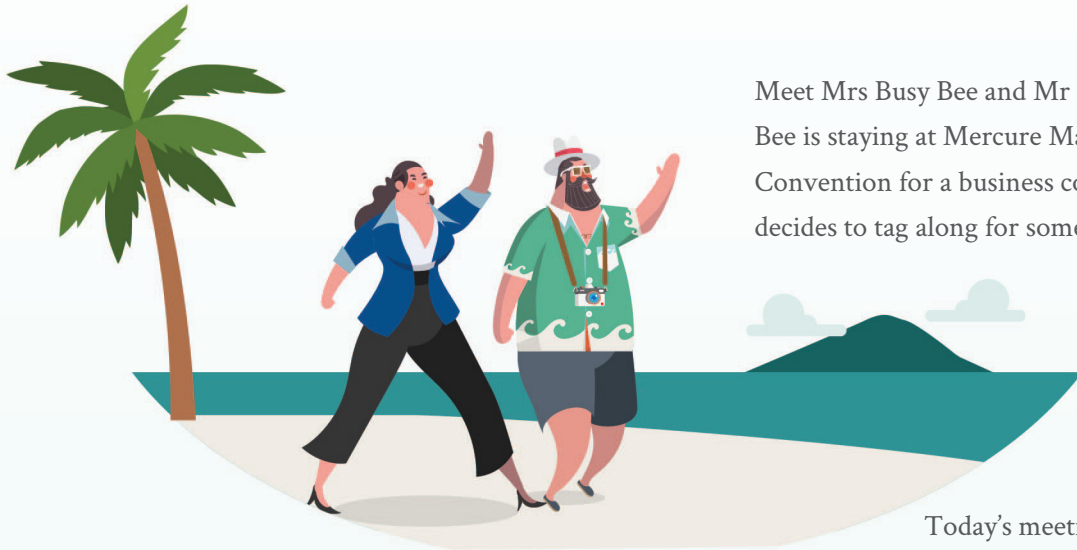
Fax: +62 431 825 999

Email: [info@mercure-manado-tateli.com](mailto:info@mercure-manado-tateli.com)





## WHERE BUSINESS MEETS LEISURE



Meet Mrs Busy Bee and Mr Scuba-Doo. Mrs Busy Bee is staying at Mercure Manado Tateli Resort and Convention for a business conference. Mr Scuba-Doo decides to tag along for some sun, sand and sea. #biztrip

Today's meeting topic is Bleisure:  
The benefits of mixing business with pleasure.



Soak up the Manadonese sun.

Life's better poolside.

Take only pictures.  
Leave only bubbles.  
Kill only time.



Cheers to working hard and playing hard.  
Stay for business and linger for leisure  
at Mercure Manado Tateli Resort  
and Convention







Photo by Annie Spratt

# TRAVEL INFORMATION



## TRAVEL INFORMATION

### CLIMATE

North Sulawesi has a typical equatorial climate with two seasons: wet and dry. The dry season starts from April to October while the wet season falls between November and March.

### LANGUAGE

Bahasa Indonesia is the official language of Indonesia. It is the language of formal communication taught in schools and used in media broadcast. Most Indonesians, aside from speaking the national language, are also fluent in their own ethnic languages and dialects, with the most widely spoken being Javanese and Sundanese. Some ethnic Chinese communities continue to speak various Chinese dialects, most notably Hokkien in Medan and Teochew in Pontianak.



*An Indonesian man*

While generally not commonly spoken, an acceptable level of English language can be understood in major cities and

tourist destinations including Bali, Batam, Jakarta, Bandung, Surabaya and Yogyakarta. Most hotel and airline staff has basic to moderate level of English.

### NATIONAL HOLIDAYS

Indonesia officially follows the Gregorian calendar. During the official holidays, offices and banks are closed, but most restaurants, department stores and entertainment facilities are usually open.

### ACCOMMODATIONS

There is a wide range of hotels, resorts and cottages to suit all tastes and budgets, from small family-run bed-and-breakfasts to 4-star beach resorts, such as Mercure Manado Tateli Resort and Convention, to 5-star luxury hotels.

### GETTING AROUND

**Bus:** Large buses aren't used much within the city except for travelling from one city/regency to another.

**Ojek:** Ojeks are motorcycle riders who take pillion passengers for a negotiable price. They are found at bus terminals and markets, or just hanging around at crossroads.

**Online Taxi:** Use your smartphone app to book an Uber-

style car or motorcycle ride at a fair price. It operates in major cities.

**Taxi:** Metered taxis are readily available in major Indonesian cities. If a taxi has a meter (argo), make sure it is used. If a meter doesn't exist, bargain for the fare in advance.



*Mikrolet*

**Mikrolet:** Mikrolet is an extremely cheap and easy mode of public transportation in the form of minibuses. Ubiquitous in many Indonesian cities, it usually has a predetermined route around cities and towns, picking up and dropping off people anywhere along the way.

**Private Cars:** Small air-conditioned minivans carrying paying passengers (known in some areas as taksi gelap) are common in some areas. Typically linking major towns on main highways, the cost can be a bit more than a bus but offers greater speed and a convenient door-to-door service.



# TRAVEL INFORMATION

## MONEY MATTERS

The currency unit used in Indonesia is the Indonesian Rupiah, issued and controlled by the Bank of Indonesia. The currency code for Rupiah is IDR, and the symbol is Rp. By law, all transactions are required to be conducted in Rupiah. Information on daily exchange rate can be found in newspapers and online.

Credit cards are widely accepted in cities, tourist areas, mid-range and better hotels, large restaurants and major stores; MasterCard and Visa being the most commonly accepted credit cards.

Cash advances are possible at many ATMs or banks. ATMs are common across big cities except in rural areas; most now accept cards affiliated with international networks. Always carry a sizeable amount of Rupiah when travelling outside of cities and tourist areas.



## DAILY COST

### Budget:

- Less than Rp 500,000
- Simple room: less than Rp 200,000
- Cheap street meals: less than Rp 30,000
- Local transport such as mikrolet: from Rp 20,000

### Mid-range:

- Rp 500,000 – Rp 2,000,000
- Double room with air-conditioner: around Rp 300,000 – Rp 800,000
- Guides, plus meals in restaurants Rp 200,000 – Rp 500,000

### Top-end:

- More than Rp 2,000,000
- Stay at resorts or boutique properties in remote places: more than Rp 850,000
- Private cars with drivers to get around: Rp 500,000 – Rp 1,000,000
- Special tours and activities such as diving and dining at top restaurants: more than Rp 1,000,000

## GETTING THERE

Manado's Sam Ratulangi International Airport is serviced by international flights from Singapore and daily domestic



flights from major Indonesian cities, including Jakarta, Surabaya, Bali, Makassar, Sorong and Balikpapan.

## TRAVEL DOCUMENTS

All travellers to Indonesia must be in possession of a passport that is valid for at least six months from the date of arrival and have proof (tickets) of onward or return passage.

Indonesia has given a visa-free facility to 169 countries under the new visa regulation. The visa exemption is valid for 30 days, and is non-extendable and non-convertible into another kind of stay permit.

The visa exemption facility can be used for transit, tourism, family, social, art and cultural



visits, government duties, to deliver a speech, or to attend seminars, international exhibitions and meetings with head or representative offices in Indonesia.

If the 30 days of Visit Visa Exemption facility is insufficient, visitors can apply for Visa on Arrival or Visit Visa (valid for 30 days and extendable for another 30 days), which can be obtained at designated entry airports and seaports.

**HEALTH**

Check with your doctor at least four to six weeks before your trip, in case you need any specific vaccinations or other preventive measures. Hepatitis A, B and typhoid, tetanus and rabies vaccinations are some examples of recommended vaccinations for Indonesia.

There is a risk of dengue fever, a mosquito-borne virus in Indonesia, especially during the rainy season (between July and November in North Sulawesi). There is no specific antivirus treatment or vaccine available. Prevention is the most important step in reducing the risk of dengue infection. Protect yourself from mosquito bites at all

times in dengue-prone areas. The standard of local medical care can be low, and good medical care can be very expensive. Travel insurance is a must. Compare policies and purchase online before your trip. Make sure that you are covered in case of medical treatment abroad and repatriation. Scuba divers are advised to check with your insurer to ensure that you are covered.

Tap water is not potable throughout Indonesia. As part of AccorHotels' Planet 21 Acting Here initiatives, Mercure Manado Tateli Resort and Convention is pleased to partner with AKE, a local mineral water supplier, to reduce plastic waste and increase awareness of the harm of using plastic products. We have provided our guests with a water



jug in each room to replace single-use plastic bottles, refillable from one of the designated drinking water fountains in the corridors.

**CONNECTIVITY**

Wi-Fi Internet connection can be unreliable in Sulawesi and there aren't many cafes and restaurants with Wi-Fi. If you need to stay connected at all times, consider getting a prepaid local SIM card. They are cheap and readily available across Indonesia.

**EMERGENCY & ESSENTIAL NUMBERS**

- Indonesia country code: 62
- International call prefix: 001/017
- International operator: 102
- Directory assistance: 108
- Emergency services: 112





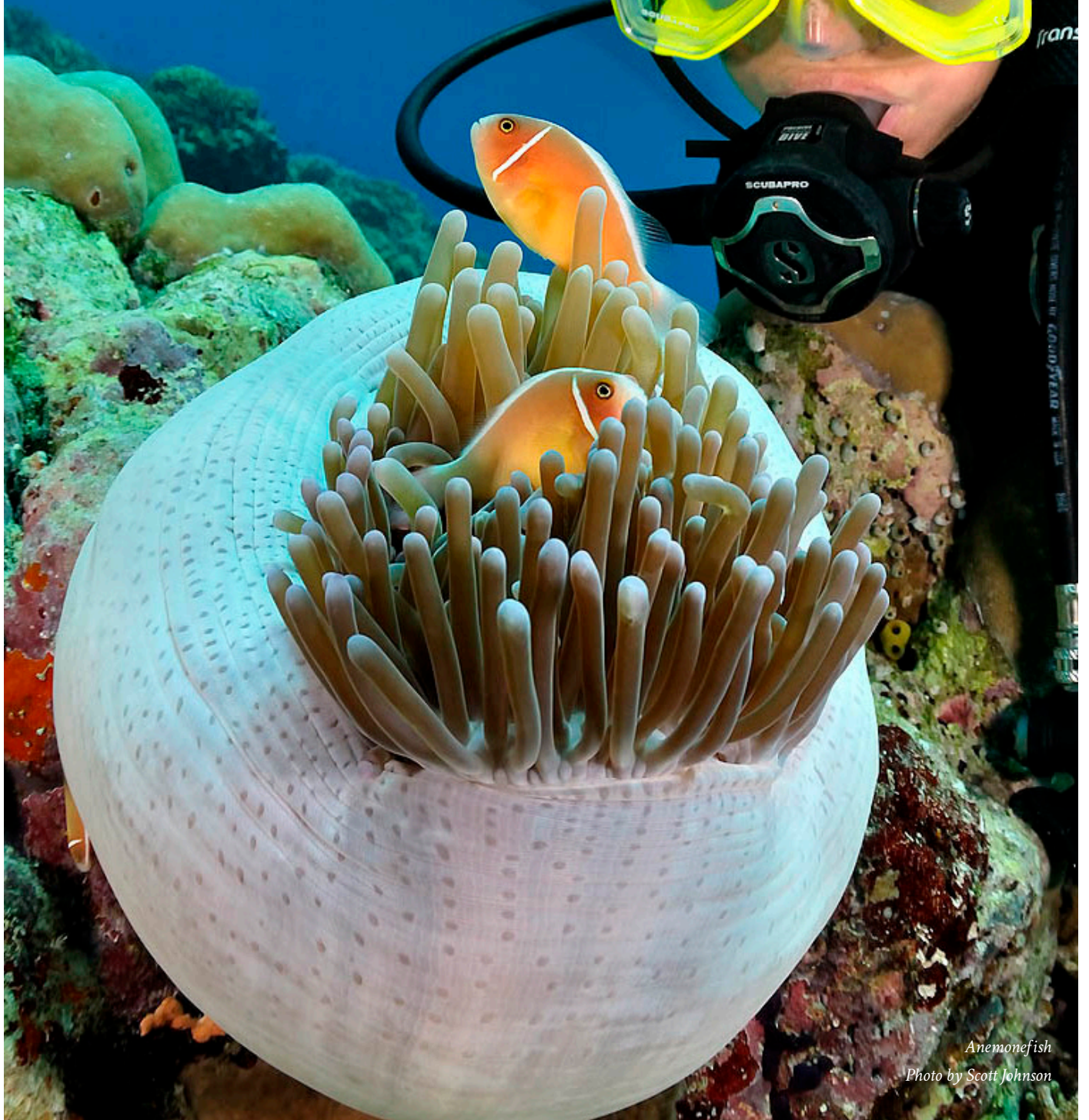




*Bunaken National Marine Park  
Photo by Rod Klein*



SEE YOU  
UNDERWATER !



*Anemonefish  
Photo by Scott Johnson*









MERCURE MANADO TATELI RESORT AND CONVENTION

**Mercure Manado Tateli Resort and Convention**  
Jalan Raya Tanawangko, Desa Tateli  
Kecamatan Mandolang, Kabupaten Minahasa  
Sulawesi Utara, Indonesia  
**Tel:** +62 431 825 888 **Fax:** +62 431 825 999  
**Email:** [info@mercure-manado-tateli.com](mailto:info@mercure-manado-tateli.com)